

Tuakana/Teina: Mentoring and the Brain

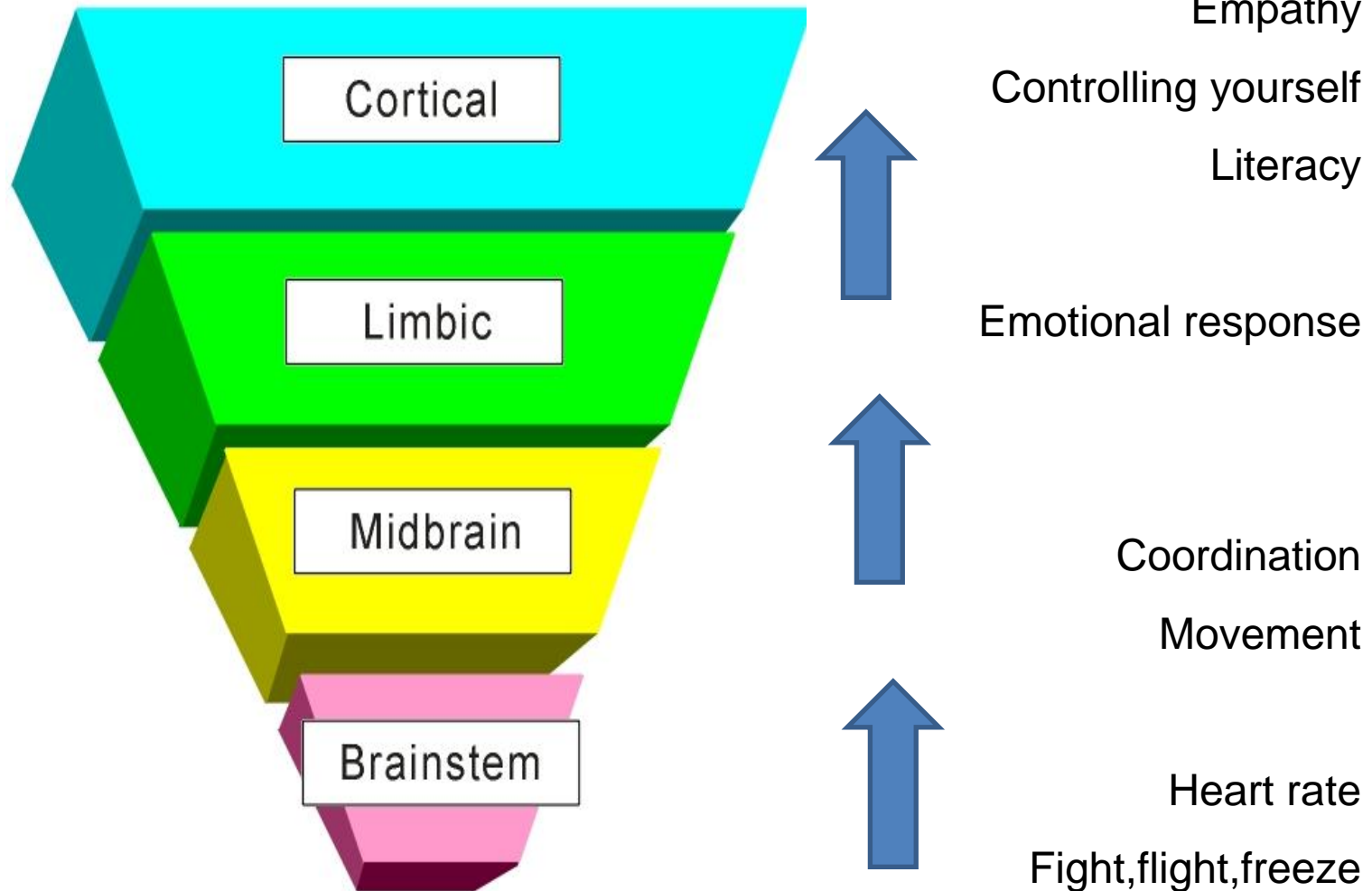


Nathan Mikaere Wallis
X Factor Education Ltd.
xfactoreducation@gmail.com



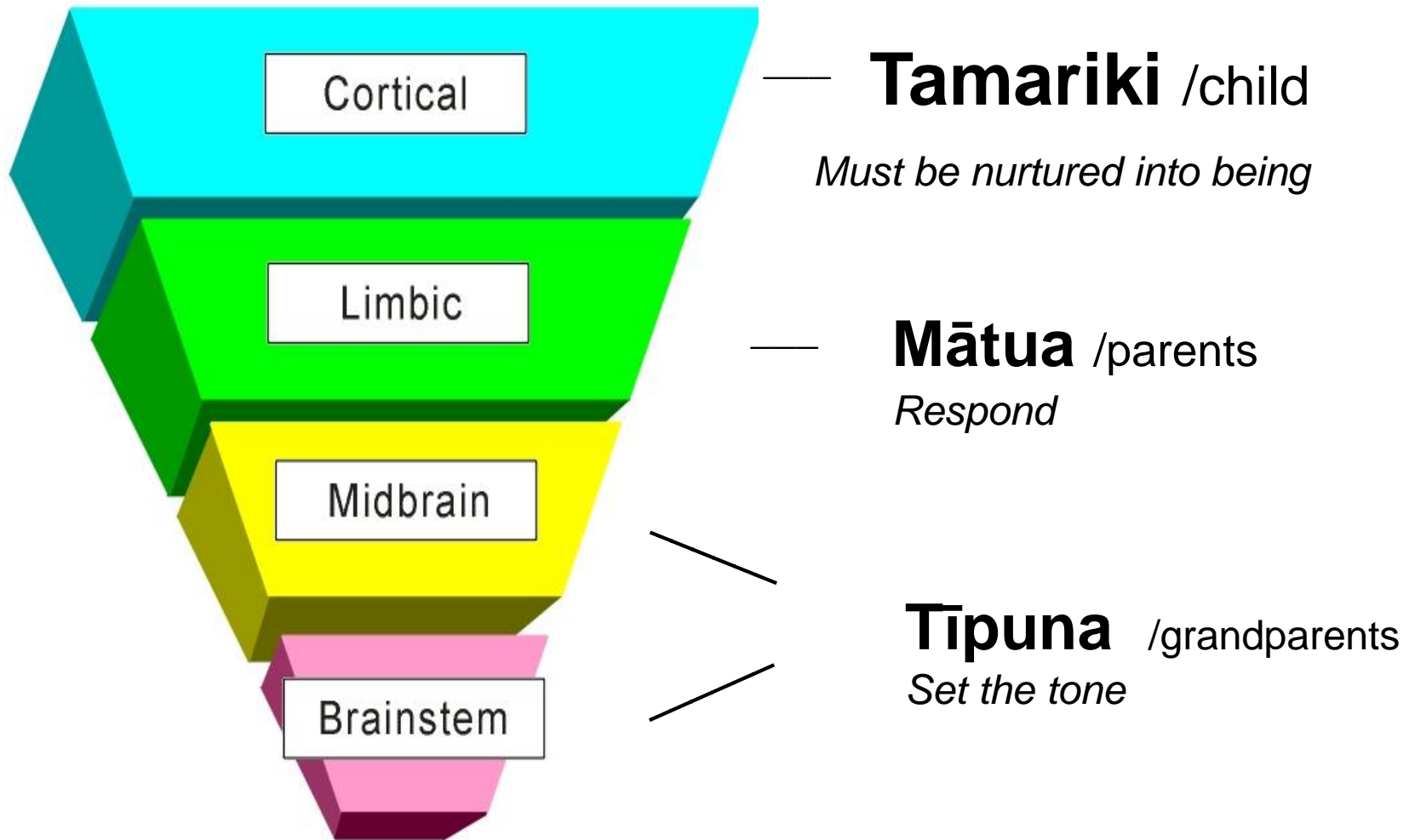


Perry's Neurosequential Model



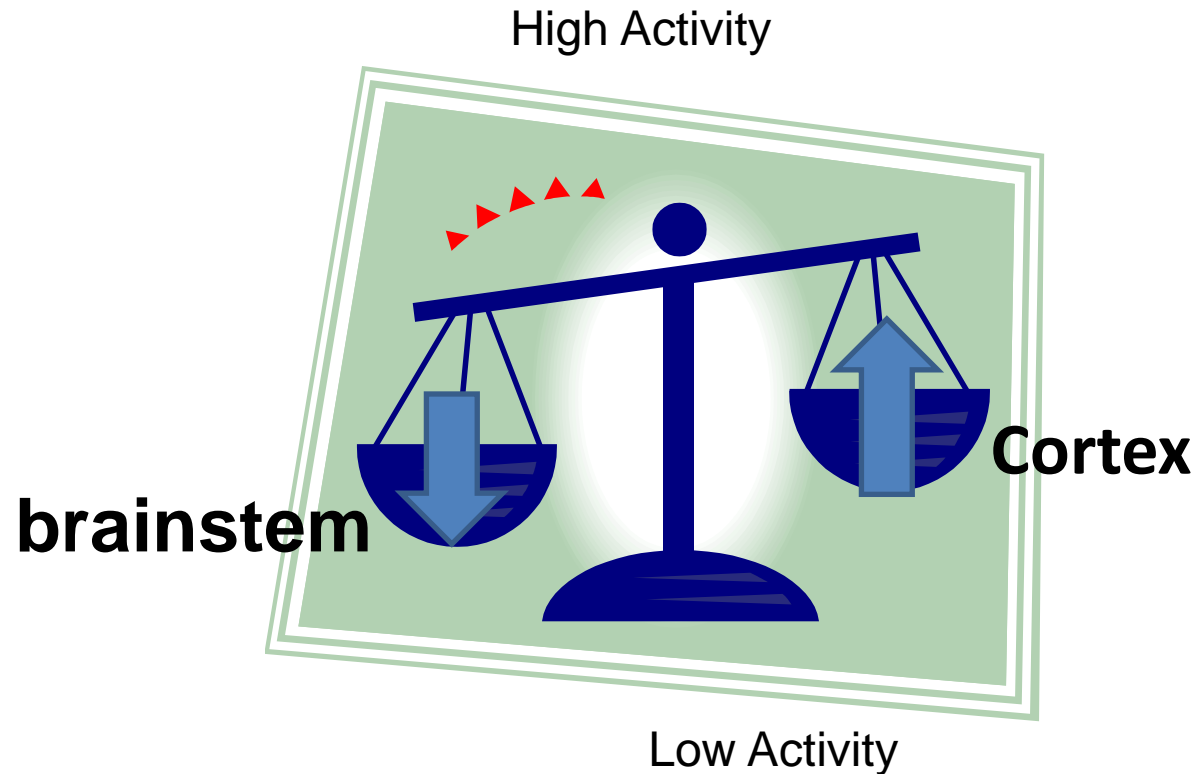
Adapted from: Perry, B.D. (2002). Childhood Experience and the Expression of Genetic Potential: What Childhood Neglect Tells Us About Nature and Nurture *Brain and Mind* 3: 79–100,

Pere's Neurosequential Model



Dr Rangimarie Turuki Rose Pere – *Oral communication 2009*

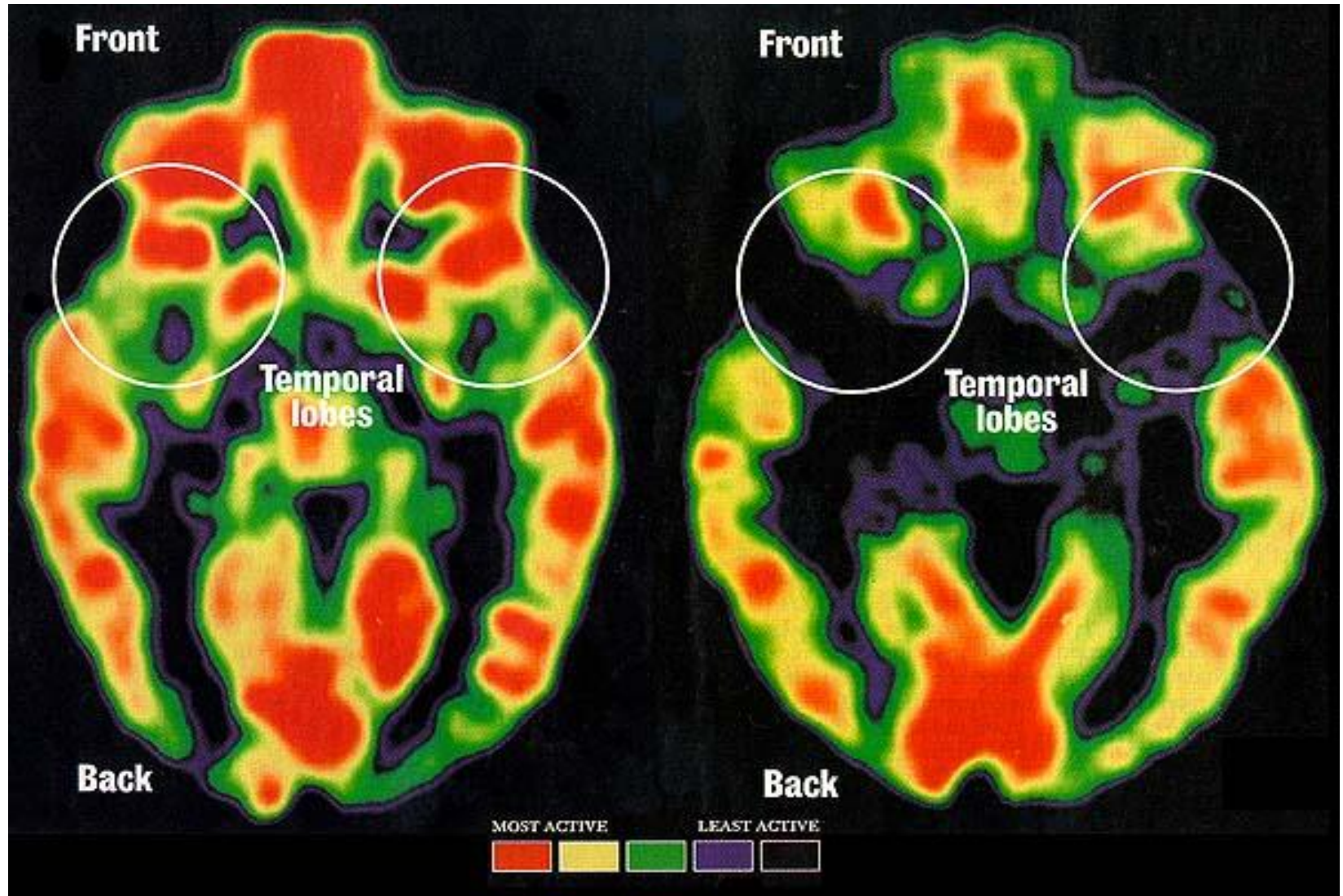
As one increases, the other declines – and vice versa



To really be using your cortex, your brainstem needs to be calm

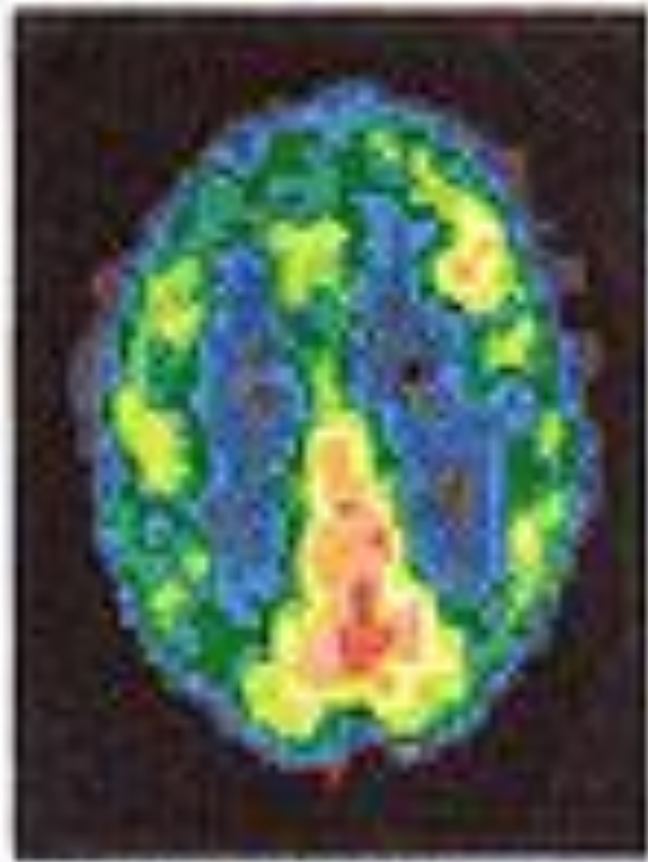


Effects of Trauma, abuse and neglect on the developing brain





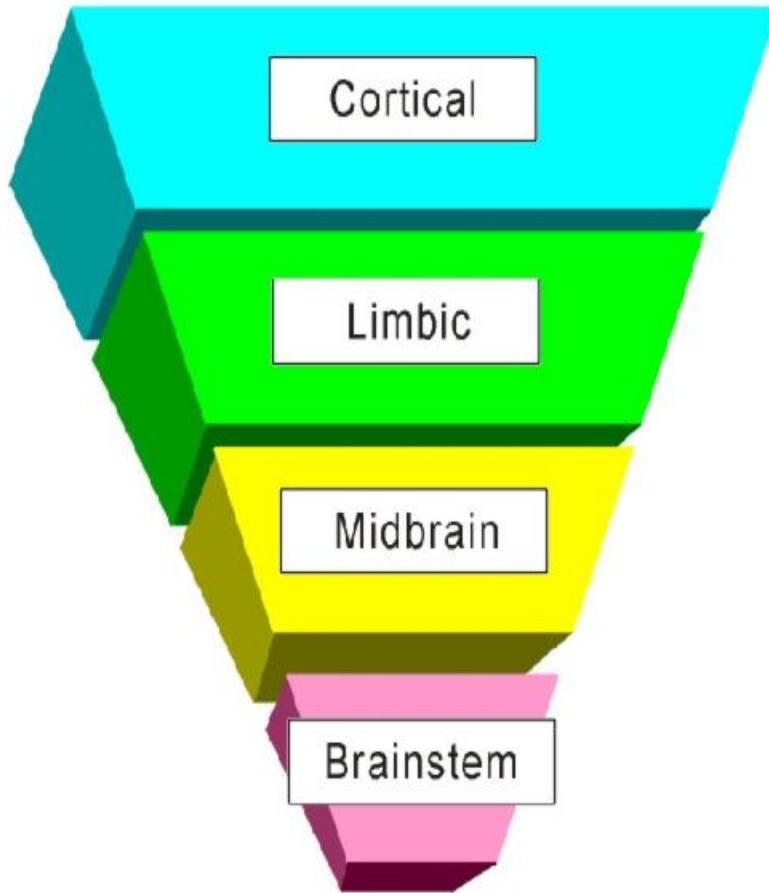
NORMAL



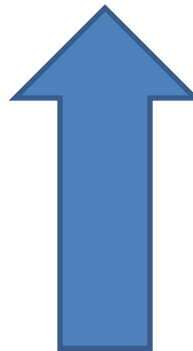
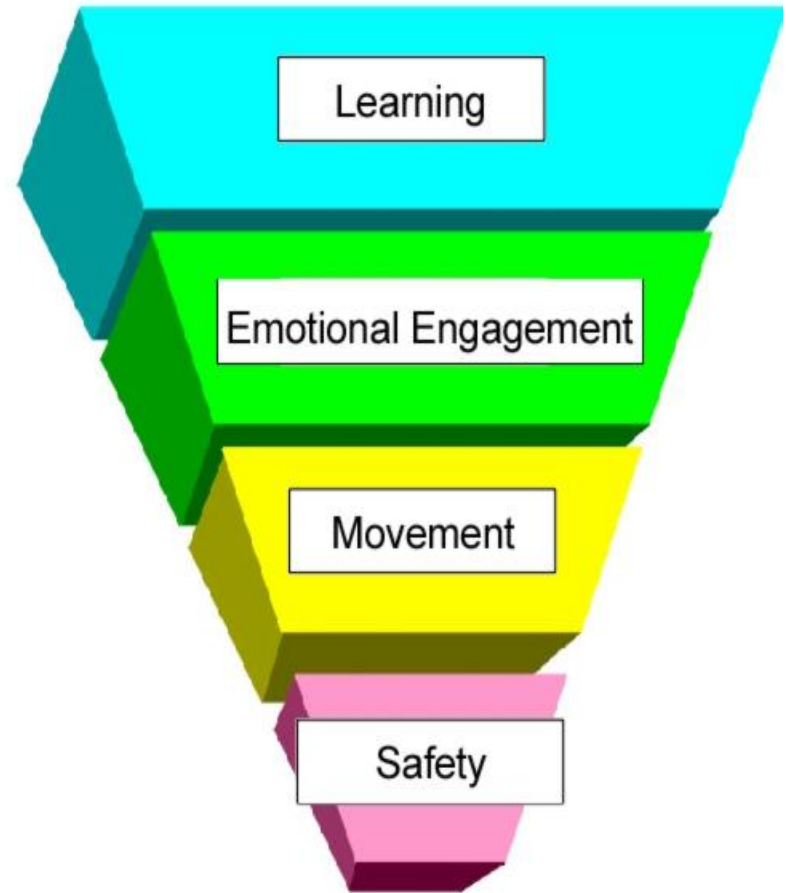
MURDERER

Image from Raine, A. (2009). *Murderous Minds: Can we see the mark of Cain?* Accessed from <http://www.dana.org/news/cerebrum/detail.aspx?id+3066> On 30/1/2011.

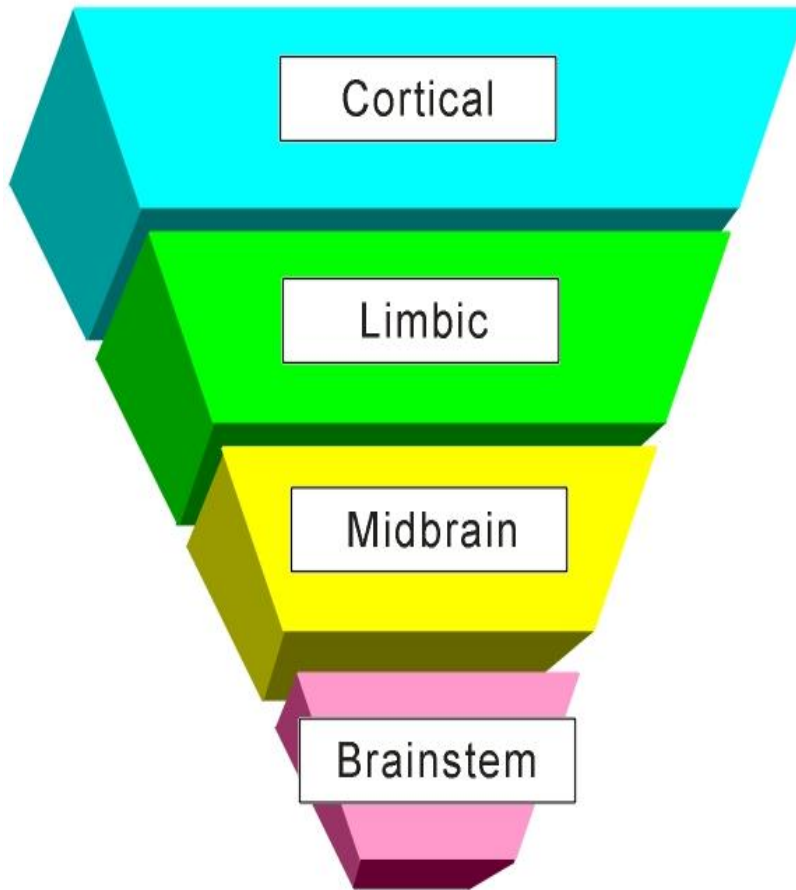
BRAIN



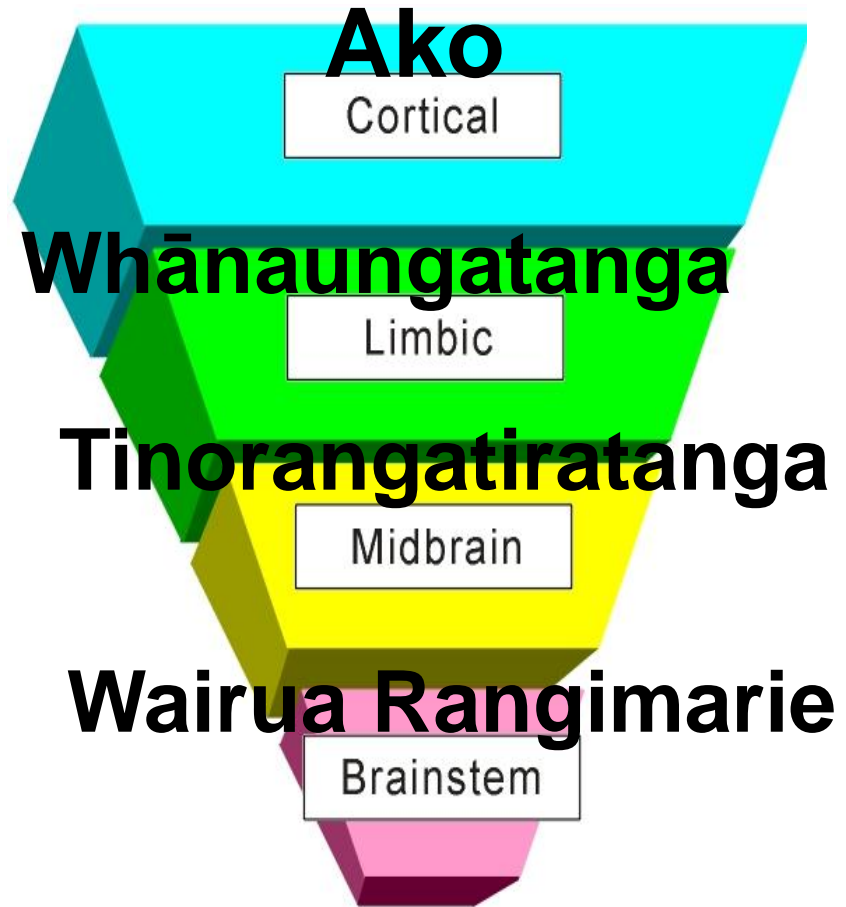
CHILD NEEDS



Tikanga ō te Roro



Tamaiti needs...



Adapted from: McCaleb, M. & Mikaere-Wallis, N. Relationship-shaping: Teacher consistency and implications for brain development. *The First Years/Ngā Tau Tuatahi: New Zealand Infant and Toddler Education*, 7(2), 21-25





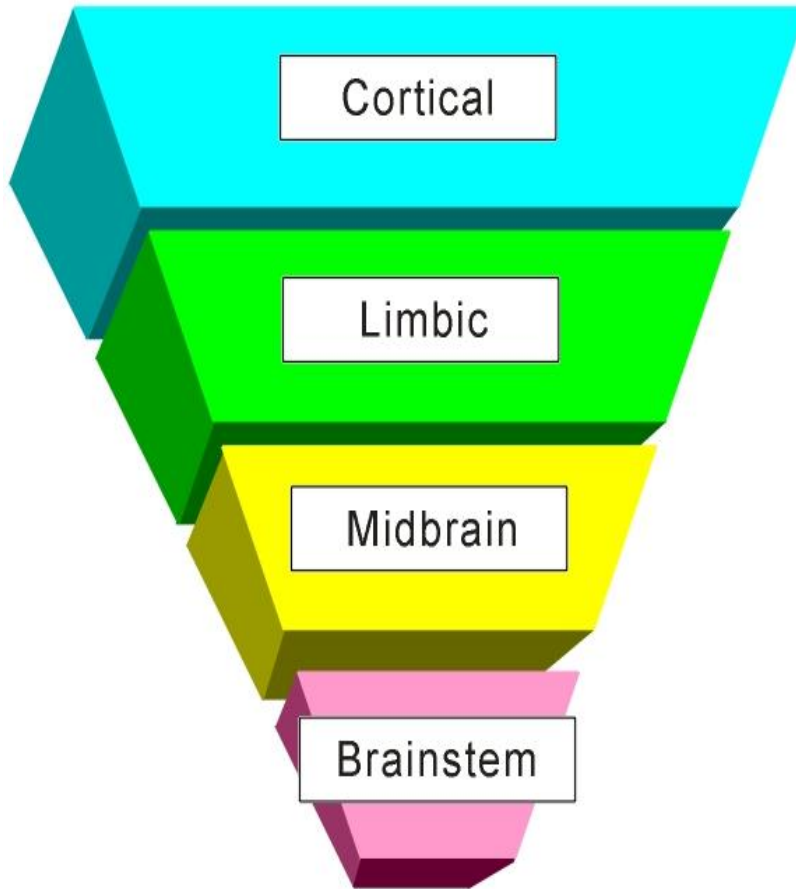
1990's The Decade of the Brain

- * *Transcription* genes/epigenetics.
- * relationship-dependant and relationship-expectant
- * early years the most important

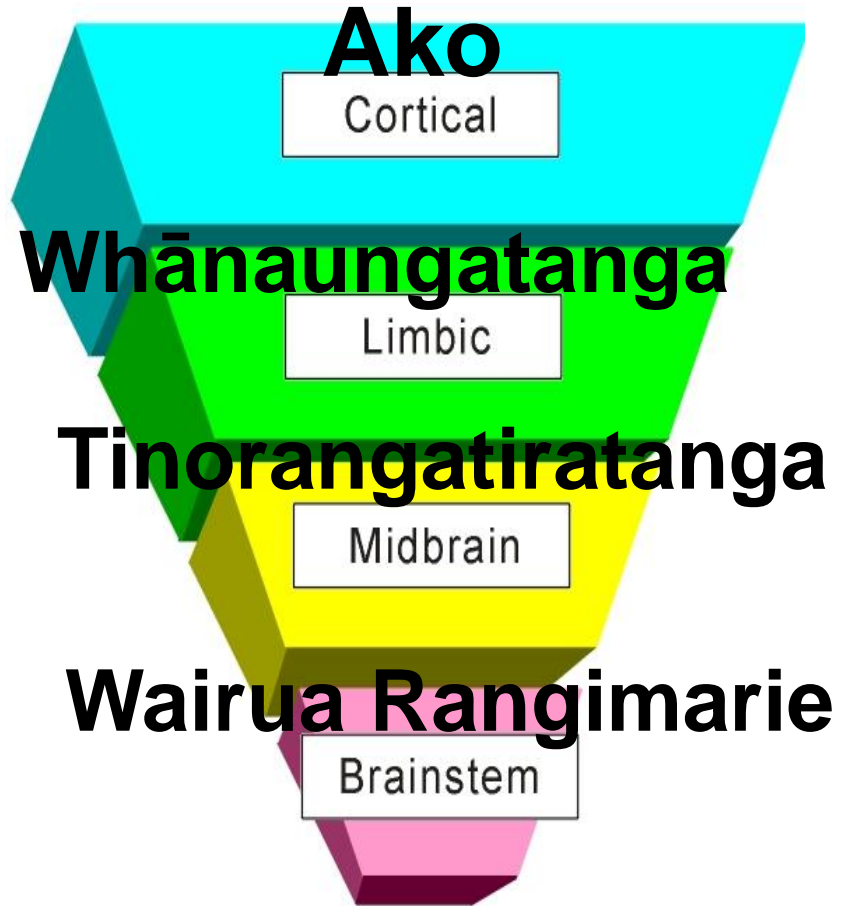
Cozolino, Louis (2006) The neuroscience of human relationships: Attachment and the developing social brain.

New York, NY, US: W W Norton & Co.

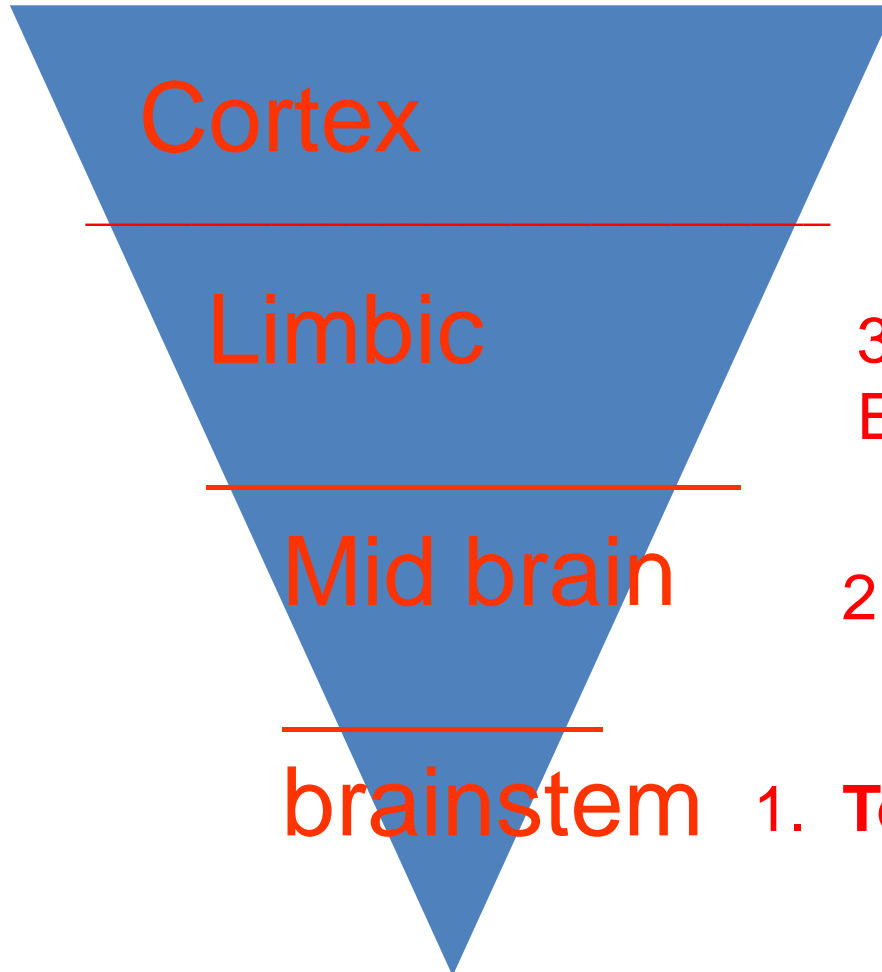
Tikanga ō te Roro



Tamaiti
needs...



Pro social behaviours



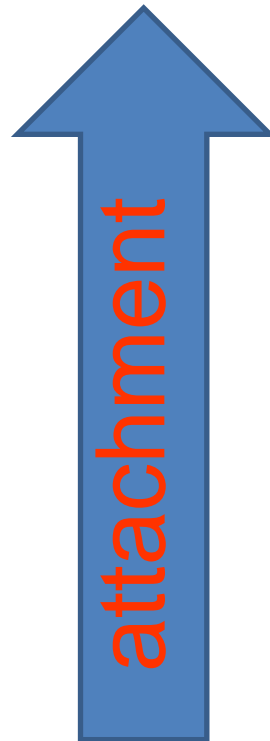
4. Cognitive Training

3. Emotional Engagement

2. Rhythm

1. Touch

Survival/reptilian behaviours



Pro social behaviours

Cortex

3. Cognitive Training

Limbic

2. Validation

Mid brain

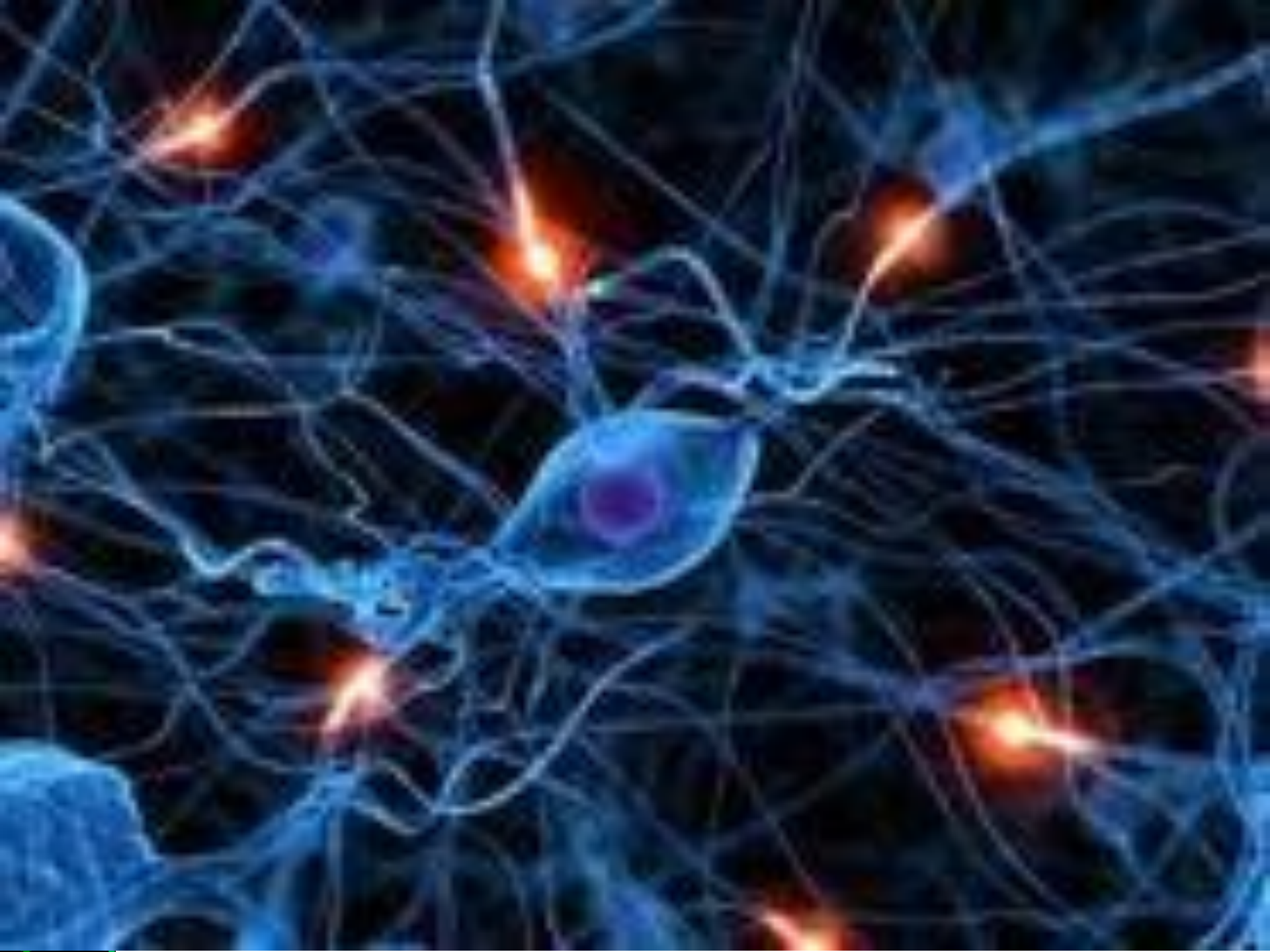
1. Safety

brainstem

attachment

stress

Survival/reptilian behaviours



If we imagine the brain as a garden....

Endorphins = Fertilizer



Cortisol = weed killer

