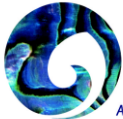




child, youth  
and family

*A service of the Ministry of Social Development*

family services  
**directory**  
help is just a **click** away



MINISTRY OF  
YOUTH DEVELOPMENT

TE MANATŪ WHAKAHIATO TAIOHI

*Administered by the Ministry of Social Development*



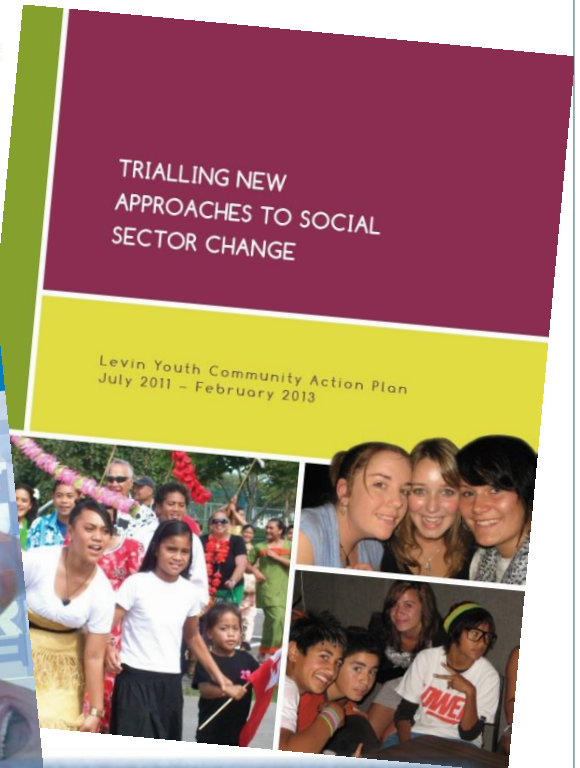
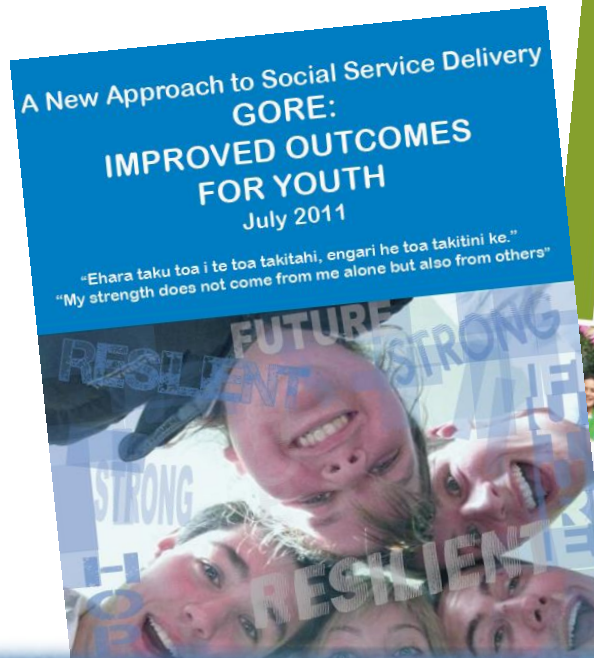
family &  
community services  
ratonga ā-whānau, ā-hapori

*A service of the Ministry of Social Development*



Work and Income  
Te Hiranga Tangata

*A service of the Ministry of Social Development*



# Children's Action Plan

Identifying, Supporting and Protecting Vulnerable Children

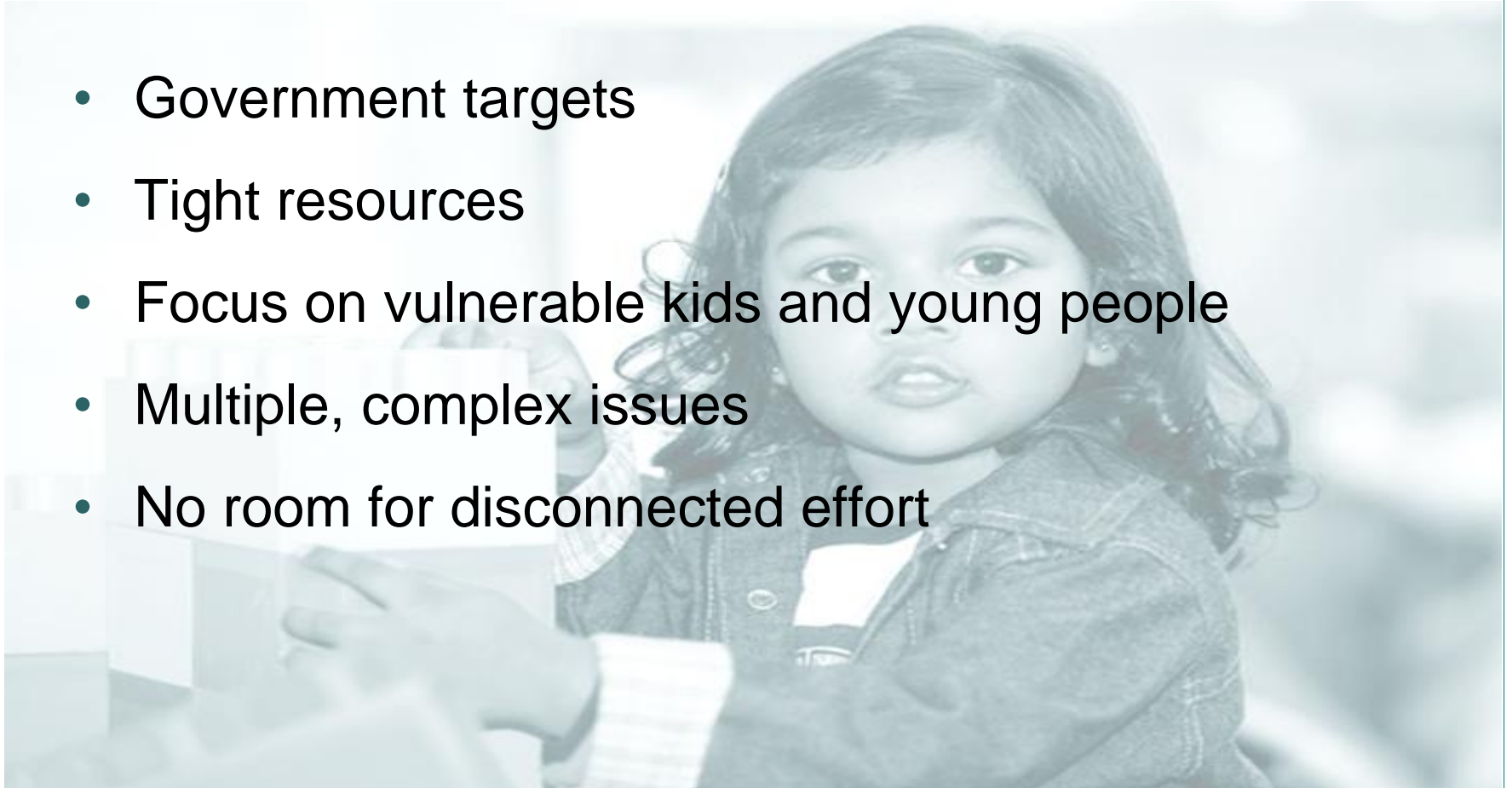






# Challenges

- Government targets
- Tight resources
- Focus on vulnerable kids and young people
- Multiple, complex issues
- No room for disconnected effort



# ➤ Joining up around young people



**Doing good things independently is not enough**



# A workforce for kids

- From communities to chief executives
- Accountable
- Safe and competent
- Good people, proven practices, safe systems
- Best practice mentoring – part of the Children's Action Plan





# What's next?

- Mentoring works – we need to know more
- Support services that make the most difference
- Strengthening our NGOs
- Find ways to work together
- Flexible funding and joined-up community approaches





# Levin – community-led, teamed-up action



Working differently for young people





